

Font Converter Training

Font Converter_Training.zip



Font Converter - Overview

Main Functions

- Convert and check a font of a drawing easily
- Selects target fonts for being changed simply
- Customize the font for selected annotations

Benefits

- Useful to standardize in-house drawing templates
- Save time needed for converting fonts
- Easily check the fonts used in this file without delay



Course Objective: Follow instructions through the course and learn how to use Font Converter.

Font Converter

Font

Font convert to

Cooper Black

PREVIEW sentence 123

Target

☐ Annotation

☐ Note
☐ Ballon
☐ Datum

☐ Weld Symbol
☐ Geometric Tolerance
☐ Surface Finish

☐ Others

☐ Dimension
☐ View Text
☒ Table

☐ Block
☐ Sheet Format

Font Review

Loading has been completed.

OK

Close

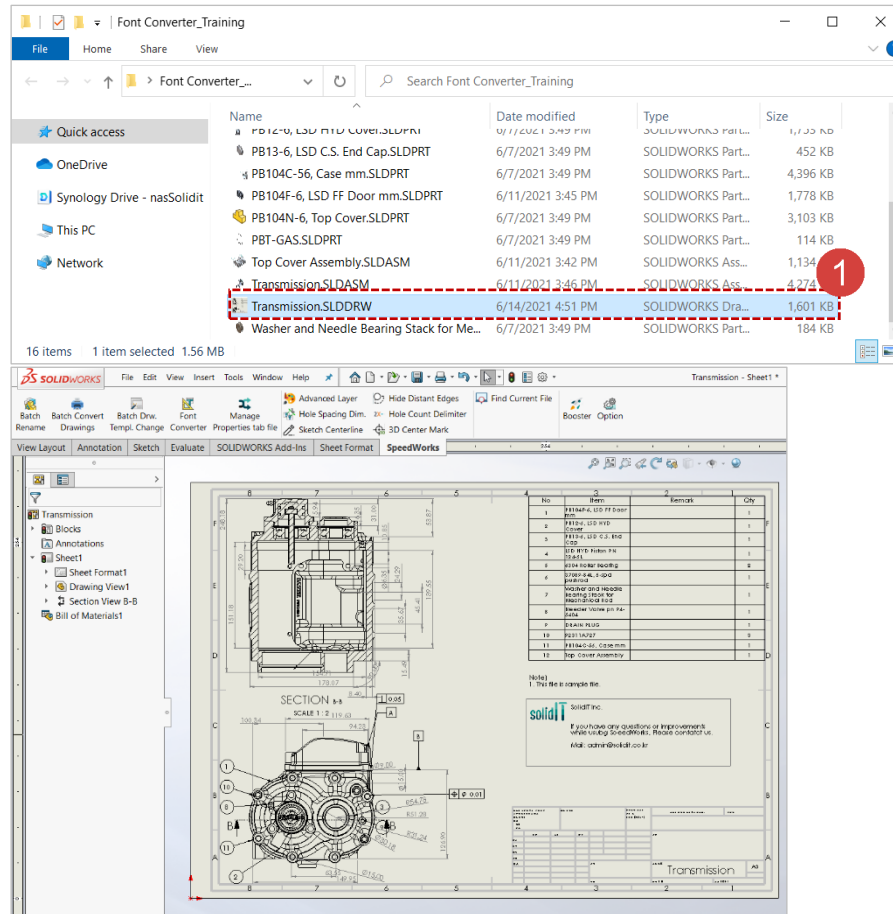
No	Item	Remark	Qty
1	PB104F-6, LSD FF Door mm		1
2	PB12-6, LSD HYD Cover		1
3	PB13-6, LSD C.S. End Cap		1
4	LSD HYD Piston PN 124-5L		1
5	6304 Roller Bearing		2
6	37089-84L, 5-spd pushrod		1
7	Washer and Needle Bearing Stack for Mechanical Rod		1
8	Bleeder Valve pn 94-5404		1
9	DRAIN PLUG		1
10	92311A727		
11	PB104C-56, Case mm		
12	Top Cover Assembly		

No	Item	Remark	Qty
1	PB104F-6, LSD FF Door mm		1
2	PB12-6, LSD HYD Cover		1
3	PB13-6, LSD C.S. End Cap		1
4	LSD HYD Piston PN 124-5L		1
5	6304 Roller Bearing		2
6	37089-84L, 5-spd pushrod		1
7	Washer and Needle Bearing Stack for Mechanical Rod		1
8	Bleeder Valve pn 94-5404		1
9	DRAIN PLUG		1
10	92311A727		3
11	PB104C-56, Case mm		1
12	Top Cover Assembly		1

Font Converter - Open Drawing File

1 Execute **Transmission.SLDDRW** file among example files.

2 Click **[SpeedWorks]**tab - **[Font Converter]** to run the tool.



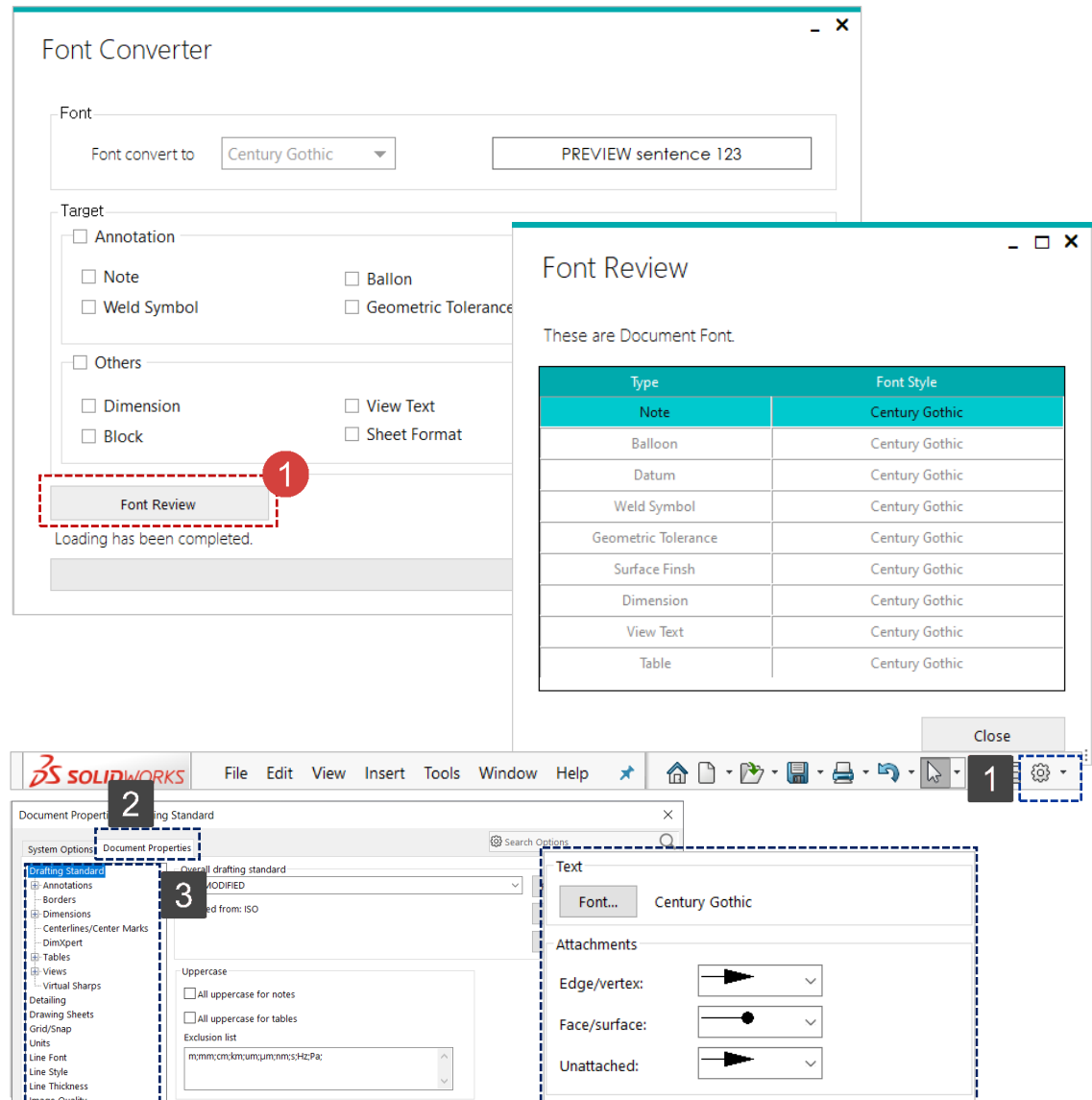
※ You can download example files at Support page in SpeedWorks Homepage(<http://speedworks.info>).

Work on the part with the red circle (1) following instructions by yourself.
The part with the black square (1) is an additional explanation or a reference.

Font Converter - Font Review

Work on the part with the red circle (1) following instructions by yourself.
The part with the black square (1) is an additional explanation or a reference.

1 Once users click **[Font Review]**, Font Review window will pop up. Users can review fonts of drawings at the window.



With Font Review, users skip 1, 2, 3 steps and review fonts in much simpler way.

1 Click setting button at the top.

2 Click Document Properties.

3 Review fonts by each text type.

Font Converter - Annotations

Work on the part with the red circle (1) following instructions by yourself.
The part with the black square (1) is an additional explanation or a reference.

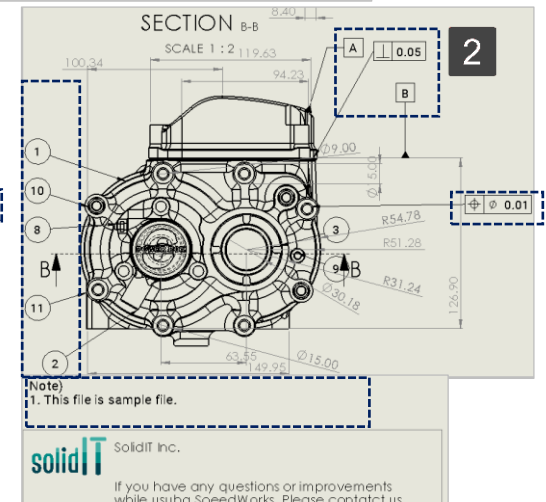
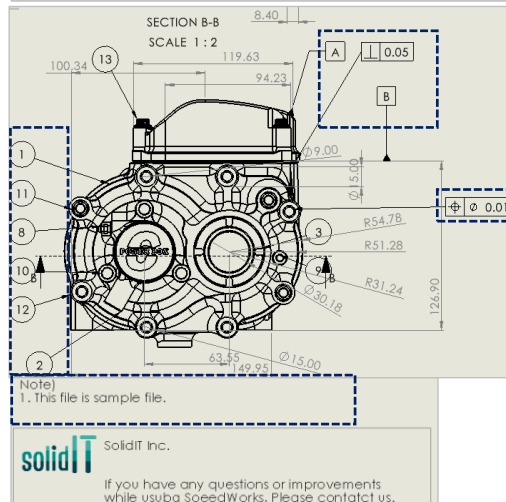
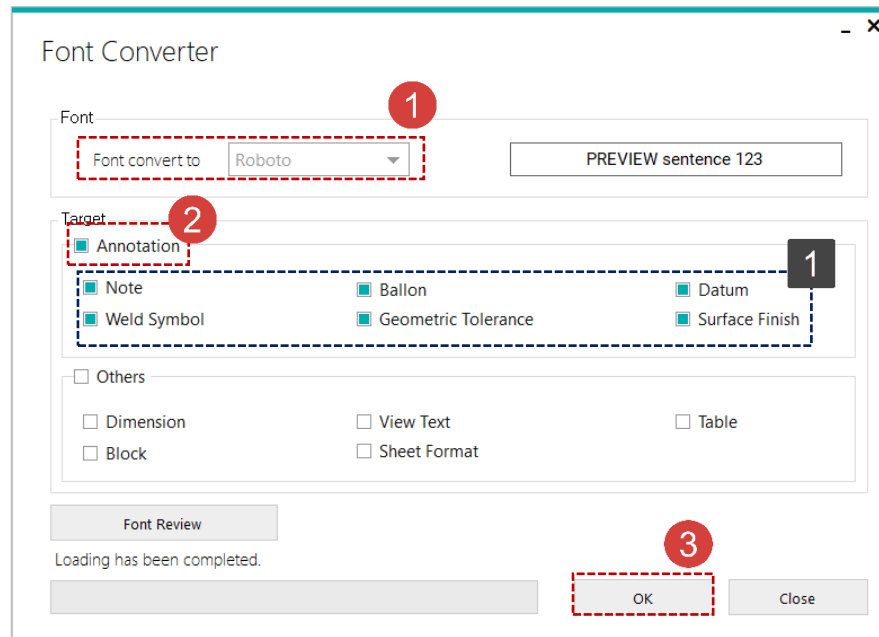
1 Select '**Roboto**' to change the font from default font .

2 Check annotations of which fonts should be converted. If users check [**Annotations**], all annotations will be selected.

3 Click [**OK**] button to convert fonts.

1 If users check [**Annotations**], all the items in Annotation box will be checked at once.

2 The fonts of the annotations(Note, Balloon, Datum, Geometric Tolerance, Surface Finish) are converted to Roboto as follows.



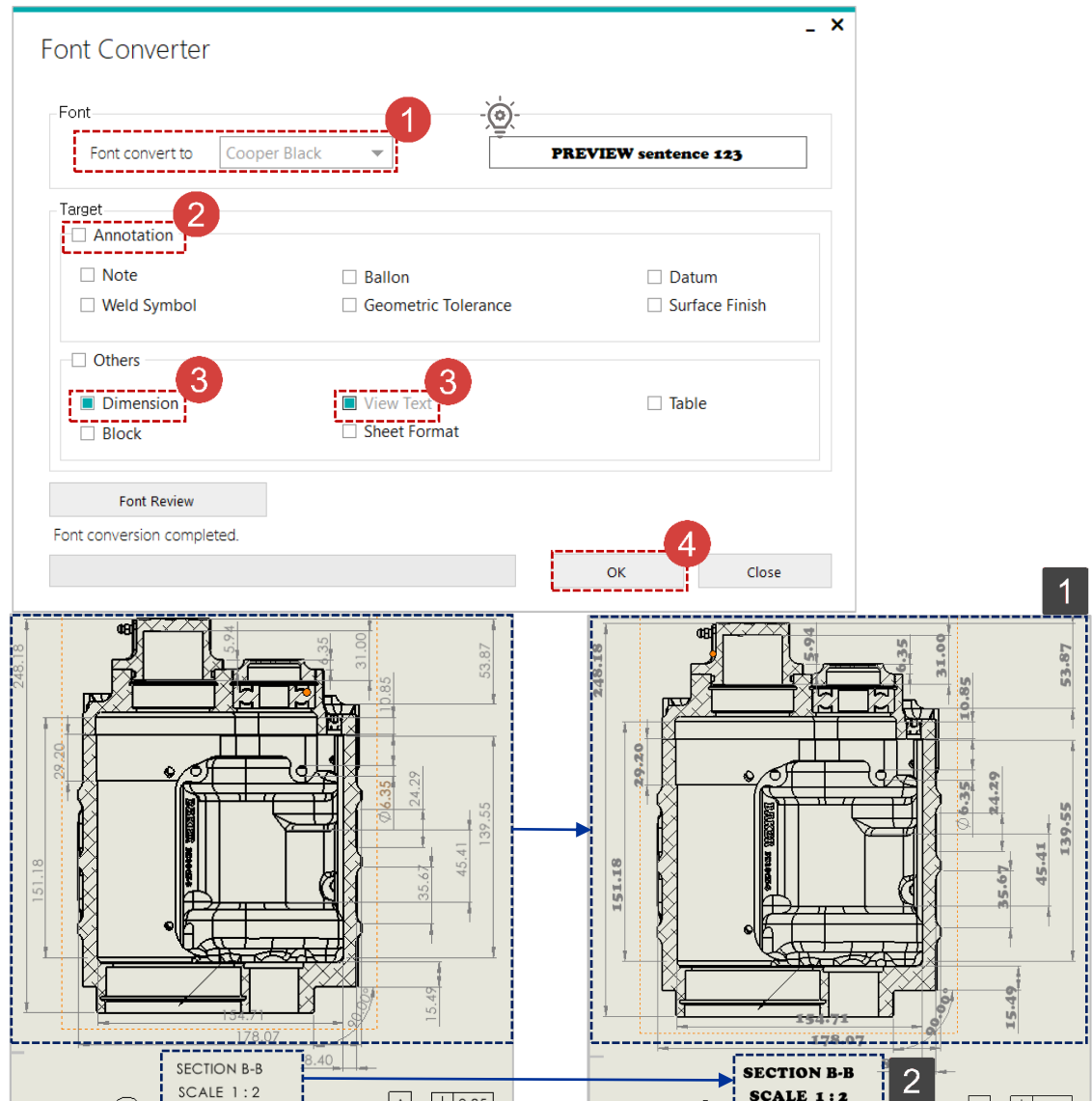
Font Converter - Dimension, View Text

Work on the part with the red circle (1) following instructions by yourself.
The part with the black square (1) is an additional explanation or a reference.

- 1 Select the font, 'Cooper Black'.
- 2 Uncheck [Annotations].
- 3 Check [Dimension], [View Text].
- 4 Click [OK] button to convert fonts.

Some fonts do not contain specific character.
Hence, use preview window to check what the font support specific character before using it.

- 1 The font of Dimension has been changed to Cooper Black.
- 2 The font of View Text has been changed to Cooper Black.



Font Converter - Table

Work on the part with the red circle (1) following instructions by yourself.
The part with the black square (1) is an additional explanation or a reference.

- 1 Select the font, 'Cooper Black'.
- 2 Uncheck [Dimension], [View Text].
- 3 Check [Table].
- 4 Click [OK] button to convert fonts.

Font Converter

Font

Font convert to: Cooper Black

PREVIEW sentence 123

Target

☐ Annotation

☐ Note ☐ Ballon ☐ Datum

☐ Weld Symbol ☐ Geometric Tolerance ☐ Surface Finish

☐ Others

☐ Dimension ☐ View Text ☒ Table

☐ Block ☐ Sheet Format

Font Review

Loading has been completed.

OK Close

- 1 The font of Table has been changed to Cooper Black.

No	Item	Remark	Qty
1	PB104F-6, LSD FF Door mm		1
2	PB12-6, LSD HYD Cover		1
3	PB13-6, LSD C.S. End Cap		1
4	LSD HYD Piston PN 124-5L		1
5	6304 Roller Bearing		2
6	37089-84L, 5-spd pushrod		1
7	Washer and Needle Bearing Stack for Mechanical Rod		1
8	Bleeder Valve pn 94-5404		1
9	DRAIN PLUG		1
10	92311A727		3
11	PB104C-56, Case mm		1
12	Top Cover Assembly		1

No	Item	Remark	Qty
1	PB104F-6, LSD FF Door mm		1
2	PB12-6, LSD HYD Cover		1
3	PB13-6, LSD C.S. End Cap		1
4	LSD HYD Piston PN 124-5L		1
5	6304 Roller Bearing		2
6	37089-84L, 5-spd pushrod		1
7	Washer and Needle Bearing Stack for Mechanical Rod		1
8	Bleeder Valve pn 94-5404		1
9	DRAIN PLUG		1
10	92311A727		3
11	PB104C-56, Case mm		1
12	Top Cover Assembly		1

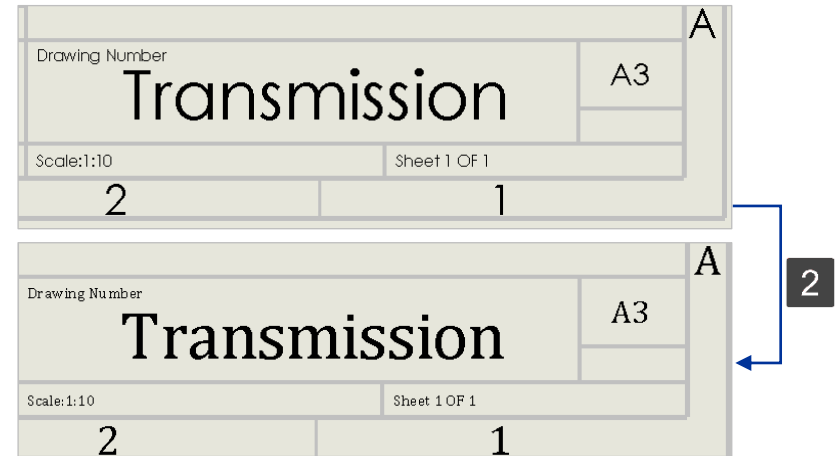
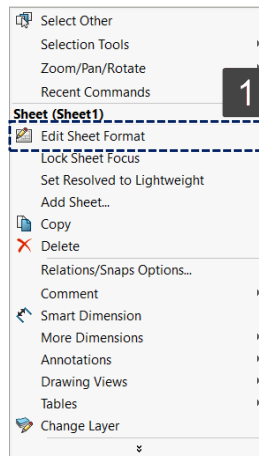
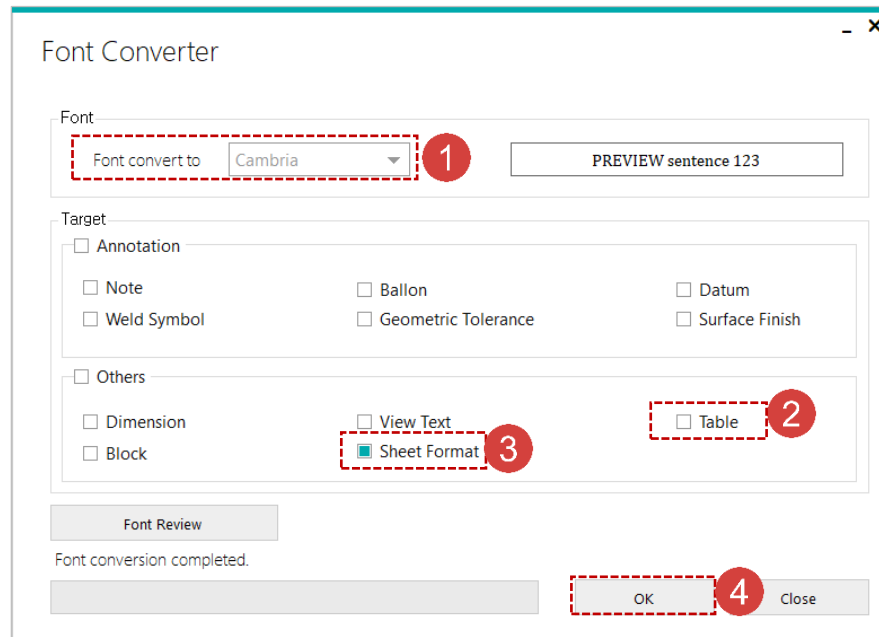
Font Converter - Sheet Format

Work on the part with the red circle (1) following instructions by yourself.
The part with the black square (2) is an additional explanation or a reference.

- 1 Select the font, '**Cambria**'.
- 2 Uncheck **[Table]**.
- 3 Check **[Sheet Format]**.
- 4 Click **[OK]** button to convert fonts.

1 If users use **[Font Converter]** tool to convert a font of a sheet format, there is no need to use **[Edit Sheet Format]** tool.

2 Simply check **[Sheet Format]** in **[Font Converter]** to convert fonts of every letter in a sheet.



Font Converter - Blocks

Work on the part with the red circle (1) following instructions by yourself.
The part with the black square (1) is an additional explanation or a reference.

- 1 Select the font, '**Roboto**'.
- 2 Uncheck [**Sheet Format**].
- 3 Check [**Blocks**].
- 4 Click [**OK**] button to convert fonts.

- 1 The font of Blocks has been changed to Roboto.
- 2 If users want to convert the font of Blocks in a sheet format, check both Blocks and Sheet Format at Font Converter.

